

PZRAFLO Procedures and Error Handling

This program is run to create a demographic file that we send to Aflac twice per month, on the 13th of every month, which is two days prior to them creating our annual load file, and again at the end of the month. It creates a fixed with file called CENSUS.txt.

File layout of CENSUS.txt.

Start	End	Description
1	12	SSN
13	42	First Name
43	72	Middle Name
73	102	Last Name
103	111	Employee ID
112	119	Hire Date YYYYMMDD
120	127	Birth Date YYYYMMDD
128	162	Address Line 1
163	197	Address Line 2
198	217	City
218	226	Zip
227	228	State
229	234	Location
235	236	Pay Frequency

To create this file you go into Banner then go to the PZRAFLO process.

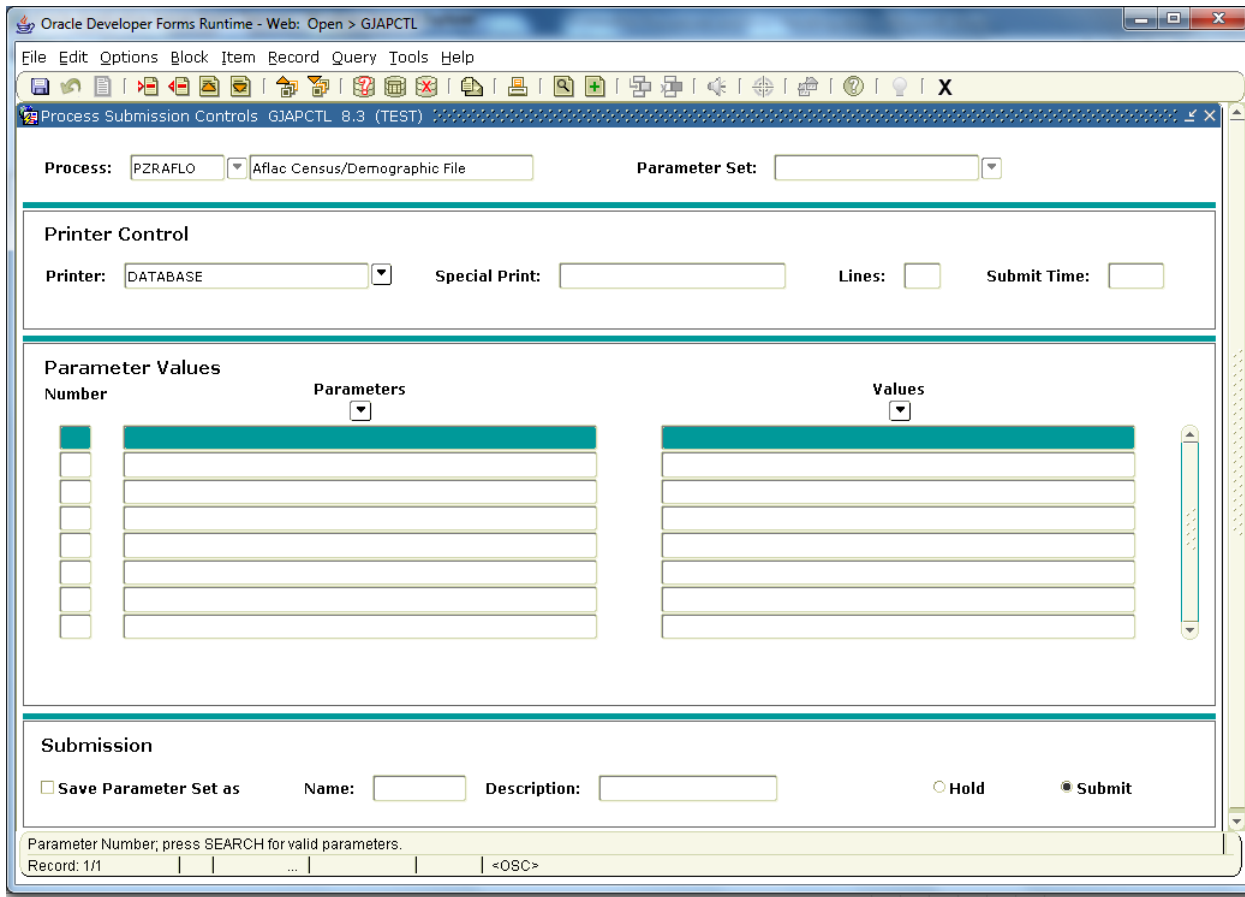
Type in PZRAFLO hit the tab key this will display a description of the process.

Click on NEXT BLOCK to go to the Printer Control section, and fill in the Printer field with appropriate value. If just running to the database use the word "database", "Database", or "DATABASE" makes no difference.

Click on NEXT BLOCK to get to the Parameter Values section. This program has no parameters.

Click on NEXT BLOCK to move to the Submission section.

Click the SAVE diskette in the upper left corner to submit the process.

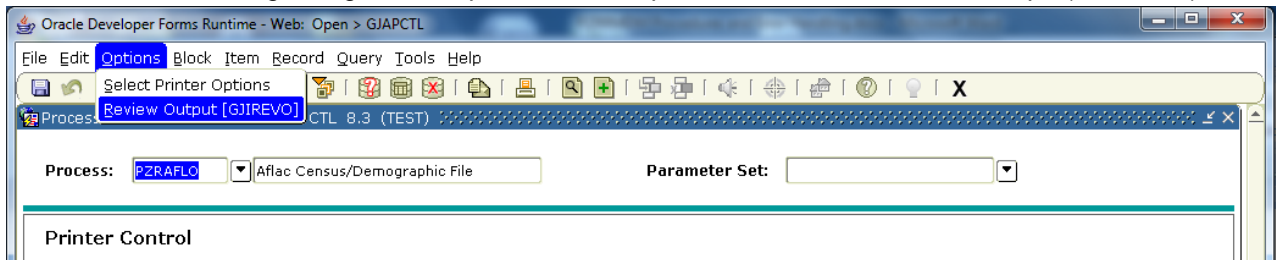


The following are all the possible parameters.

PARAMETERS:

This program has no parameters.

To view the .lis and .log files go to the options on the top menu bar click on Review Output(GJIREVO).



To view the .log and .lis files you have to click the dropdown arrow on the File Name field and the files will display in the open space below. To view the files you have to double click on the file or

Original : A00101083 mitiwari Mira
Brookings SD57006 06191989 03222009
Converted: A00101083 mitiwari Mira
Brookings SD57006 06191989 03222009
File "/u03/banjobs/pzrrmdm_303231.lis" converted successfully.
Finished Converting ...

Tiwari 655 ½ Faculty Dr
F S A SDSU mira.tiwari@jacks.sdstate.edu
Tiwari 655 Faculty Dr
F S A SDSU mira.tiwari@jacks.sdstate.edu

Successfully executed the PZRAFLO script

End Date & Time:
Mon May 17 09:00:29 CDT 2010

Completed Shell Script.
lis and log files written to database via gurinso
Connected.
Connected.

end of log file

Error Handling:

If there are errors the .log file will state any Oracle errors whatever the error might be. If you have an error that does not make sense to you then contact your RIS person to help you research what the issue might be.

Examples of errors we have seen.

1. As seen in the log file above highlighted in yellow that it had to convert UTF8 characters to ASCII characters so the file format would not be off.

If you get any other type of error let RIS know so that we can add it to this document for future reference.
