

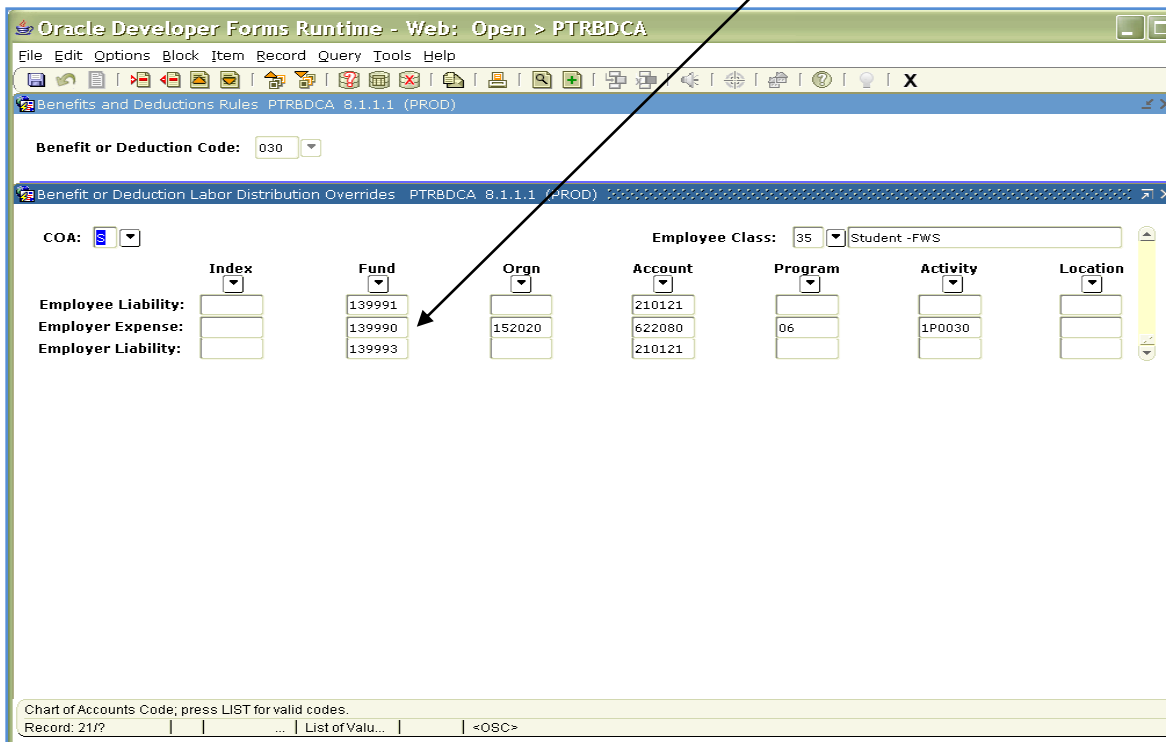
Title	Federal Work Study Benefit Transactions SPC Fund 139990
Version	1.0
Date	03/01/2011
Created by	Mary Ellen Garrett, BOR Office Kim Yunginger, SPC
Copyright	South Dakota Board of Regents
Process Owner	N/A
Dept/Division	Banner Finance
Processes	N/A

Work Study Students (ECLS 35)

The Federal Work Study Program (FWS) provides funds that are earned through part-time employment to assist students in financing the costs of postsecondary education. FWS provides for 75% of the funding while the institution provides the remaining 25%.

FWS students, enrolled during the fall and spring terms with at least six undergraduate credits or five graduate credits, are exempt from social security (BDCA 020), Medicare (BDCA 025) and unemployment (BDCA 035). FWS students enrolled during the eight-week summer sessions are also exempt from social security, Medicare, and unemployment. Students are not exempt from workmen’s comp (BDCA 030). Students who do not qualify for FWS and coded to ECLS 36 are subject to the aforementioned benefits.

The federal share may not be used to provide fringe benefits such as sick leave, vacation pay, or holiday pay, or employer’s contributions to Social Security, workers’ compensation, retirement, or any other welfare or insurance program. These restrictions on the federal share apply even when the Department authorizes a federal share of 100% of FWS wages. When Banner Payroll went live in 2007, there was a distribution override for the employer expense placed on BDCA’s 020, 025, 030 and 035 for ECLS 35. This FOAPAL string overrides the NBAJOBS labor distribution and posts the benefit against the Shared Payroll Center’s (SPC) clearing fund 139990.



If a student is paid from multiple fund sources, the expenses are split based on the percentage the total by fund source.

NHIDIST Extract

For SPC correction side and institution's side:

- Select data by accounting period from NHIDIST
 - Format Dollars - Dr - Positive Cr - Negative (@if cell Z7=\$Z\$6, Y*-1.00,Y *1.0)
 - Sort by FOAPAL
 - Condition format by TEXT = 139990
 - Move fund 139990 amounts to separate column
 - Sort by POSN, FOAPAL
 - Data - Total: change in POSN total institution total and SPC fund 139990 total

Action in Banner: A ZRC journal voucher (non-cash document) crediting the expenses in the Shared Payroll General Clearing - System Fund 139990 and debiting the same to the institution's appropriate FOAP.

Action in CAS: A non-cash correction document ("E" Document) crediting Shared Payroll Center Company/Center/Account (9031-150101-expense account) and debiting the institution's appropriate Company/Center/Account.

Monthly, the transaction data for the ECLS 35 will be downloaded or reported from NHIDIST for supporting documentation. The correction document will be initiated by the Shared Payroll Center and forwarded to the institutions for completion. The data downloaded from NHIDIST will be posted on **SNAP/Groups/Finance/Work Study Detail**

ODS REPORT BOR: **SPC 139990 for WorkStudy E-Correction**

For SPC correction side:

- Tab: SPC Detail Supporting Data
- Tab: SPC Exp Correction Summary (this should tie FGRGLTA 139990 1XXX transaction for the month)

Oracle Business Intelligence Discoverer Desktop - [BOR SPC 139990 for WorkStudy E-Corrections]

FEDERAL WORKSTUDY STUDENTS ECLS 35
MONTHLY PAYROLL TRANSACTIONS - SPC Exp Correction Summary
Date Selection Parameter #1: '01-APR-2011', End Date Selection: '30-APR-2011'

Page Items:

	139990 152020 622010 06 1P0020	139990 152020 622011 06 1P0025	139990 152020 622080 06 1P0030	139990 152020 622090 06 1P0035	Sum
	Total N-Trans_	Total N-Trans_	Total N-Trans_	Total N-Trans_	
BHSU TOTAL			\$277.65		\$277.65
F0003737			\$5.65		\$5.65
F0003808			\$271.80		\$271.80
DSU TOTAL			\$96.34		\$96.34
F0003808			\$96.34		\$96.34
NSU TOTAL			\$559.24		\$559.24
F0003808			\$559.24		\$559.24
SDMT TOTAL	\$45.27	\$10.58	\$45.03		\$100.88
F0003736	\$0.00	\$0.00			\$0.00
F0003737	\$0.00	\$0.00			\$0.00
F0003808	\$45.27	\$10.58	\$45.03		\$100.88
SDSU TOTAL	\$0.00	\$0.00	\$299.39	\$0.00	\$299.39
F0003730	\$0.00	\$0.00		\$0.00	\$0.00
F0003731			\$0.00		\$0.00
F0003732			\$0.00		\$0.00
F0003733			\$0.00		\$0.00
F0003734			\$0.00		\$0.00
F0003735			\$0.00		\$0.00
F0003736			\$0.00		\$0.00
F0003737			\$1.14		\$1.14
F0003776			\$0.00		\$0.00
F0003777			\$0.00		\$0.00
F0003808			\$298.25		\$298.25
USD TOTAL	\$20.02	\$4.68	\$189.09	\$0.27	\$214.06
F0003733			\$0.00		\$0.00
F0003776			\$0.00		\$0.00
F0003777			\$0.00		\$0.00
F0003808	\$20.02	\$4.68	\$189.09	\$0.27	\$214.06
Total	\$65.29	\$15.26	\$1,466.74	\$0.27	\$1,547.56

Sort by POSN FOAP SPC Detail Supporting Data SPC Exp Correction Summary

NUM

For the Institution's side:

- Tab: Sort by POSN FOAP (Sort by position and FOAPAL)
 - This provides the information by student to identify to what FOAP the correction needs to be made.
 - Parameter: Enter Begin Date and Enter End Date

Parameter Wizard

Please enter values for the following parameters:
* indicates required field

Enter Begin Date * '01-APR-2011'

Enter End Date * '30-APR-2011'

Description:

Finish Cancel Help

- Each institution can be viewed by clicking on "Employer" Page Item.
- The output may be downloaded into an Excel spreadsheet.

Oracle Business Intelligence Discoverer Desktop - [BOR.SPC.139990 for WorkStudy E-Corrections]

File Edit View Sheet Format Tools Graph Window Help

Page Items: 2011 Employer: SSGU

FEDERAL WORKSTUDY STUDENTS ECLS 35
MONTHLY PAYROLL TRANSACTIONS - Sort by POSN FOAP

CY	Payroll	Pay_2	Pay_1	Acct	Id	Position	Name	ECLS	Document	Trans_Date	RK/L	Fund	Org	Account	Prog	Activity	Loc	Dr/Cr	N-Trans	\$
2011	MN	4	0	A00142392	AIW6759		Peterson, Ashley A.	35	F0003808	21-APR-2011	ZRB	139990	152020	622080	06	1P0030	D		\$0.68	
2011	MN	4	0	A00145792	AIW6759		Peterson, Ashley A.	35	F0003808	21-APR-2011	ZNL	318000	348210	611130	02	3AC413	D		\$41.75	
2011	MN	4	0	A00145792	AIW6759		Peterson, Ashley A.	35	F0003808	21-APR-2011	ZNL	3F0214	372813	611130	08		D		\$125.00	
2011	MN	4	0	A00101046	AIW6761		Petlaert, Brittany J.	35	F0003808	21-APR-2011	ZRB	139990	152020	622080	06	1P0030	D		\$1.19	
2011	MN	4	0	A00101046	AIW6761		Petlaert, Brittany J.	35	F0003808	21-APR-2011	ZNL	3F0214	372813	611130	08		D		\$217.41	
2011	MN	4	0	A00101046	AIW6761		Petlaert, Brittany J.	35	F0003808	21-APR-2011	ZNL	3M8054	348204	611130	02		D		\$72.59	
2011	MN	4	0	A00097067	AIW6764		McCarthy, Debra J.	35	F0003808	21-APR-2011	ZRB	139990	152020	622080	06	1P0030	D		\$1.11	
2011	MN	4	0	A00097067	AIW6764		McCarthy, Debra J.	35	F0003808	21-APR-2011	ZNL	336317	348210	611130	02		D		\$67.50	
2011	MN	4	0	A00097067	AIW6764		McCarthy, Debra J.	35	F0003808	21-APR-2011	ZNL	3F0214	372813	611130	08		D		\$202.42	
2011	MN	4	0	A00094657	AIW6774		Crisler, Christopher E.	35	F0003808	21-APR-2011	ZNL	139990	152020	622080	06	1P0030	D		\$1.03	
2011	MN	4	0	A00094657	AIW6774		Crisler, Christopher E.	35	F0003808	21-APR-2011	ZNL	336856	348203	611130	02		D		\$63.20	
2011	MN	4	0	A00094657	AIW6774		Crisler, Christopher E.	35	F0003808	21-APR-2011	ZNL	3F0214	372813	611130	08		D		\$188.72	
2011	MN	4	0	A00125911	AIW6774		Danielson, Richard P.	35	F0003808	21-APR-2011	ZRB	139990	152020	622080	06	1P0030	D		\$0.92	
2011	MN	4	0	A00125911	AIW6774		Danielson, Richard P.	35	F0003808	21-APR-2011	ZNL	336856	348203	611130	02		D		\$56.32	
2011	MN	4	0	A00125911	AIW6774		Danielson, Richard P.	35	F0003808	21-APR-2011	ZNL	3F0214	372813	611130	08		D		\$168.68	
2011	MN	4	0	A00111892	AIW6774		Monthe, Kalen E.	35	F0003808	21-APR-2011	ZRB	139990	152020	622080	06	1P0030	D		\$0.43	
2011	MN	4	0	A00111892	AIW6774		Monthe, Kalen E.	35	F0003808	21-APR-2011	ZNL	336856	348203	611130	02		D		\$26.00	
2011	MN	4	0	A00111892	AIW6774		Monthe, Kalen E.	35	F0003808	21-APR-2011	ZNL	3F0214	372813	611130	08		D		\$78.00	
2011	MN	4	0	A00125026	AIW6793		Graft, Brianna J.	35	F0003808	21-APR-2011	ZRB	139990	152020	622080	06	1P0030	D		\$0.08	
2011	MN	4	0	A00125026	AIW6793		Graft, Brianna J.	35	F0003808	21-APR-2011	ZNL	318000	348216	611130	02	3AC416	D		\$4.76	
2011	MN	4	0	A00125026	AIW6793		Graft, Brianna J.	35	F0003808	21-APR-2011	ZNL	3F0214	372813	611130	08		D		\$14.37	
2011	MN	4	0	A00067105	AIW6803		Borah, Brennan B.	35	F0003808	21-APR-2011	ZRB	139990	152020	622080	06	1P0030	D		\$0.75	
2011	MN	4	0	A00067105	AIW6803		Borah, Brennan B.	35	F0003808	21-APR-2011	ZNL	328100	348216	611130	02	3AH217	D		\$46.17	
2011	MN	4	0	A00067105	AIW6803		Borah, Brennan B.	35	F0003808	21-APR-2011	ZNL	3F0214	372813	611130	08		D		\$137.83	
2011	MN	4	0	A00093771	AIW6803		Koehler, Christina M.	35	F0003808	21-APR-2011	ZRB	139990	152020	622080	06	1P0030	D		\$0.63	
2011	MN	4	0	A00093771	AIW6803		Koehler, Christina M.	35	F0003808	21-APR-2011	ZNL	328100	348216	611130	02	3AH217	D		\$38.34	
2011	MN	4	0	A00093771	AIW6803		Koehler, Christina M.	35	F0003808	21-APR-2011	ZNL	3F0214	372813	611130	08		D		\$114.66	
2011	MN	4	0	A00122841	AIW6811		Halverson, Brian R.	35	F0003808	21-APR-2011	ZRB	139990	152020	622080	06	1P0030	D		\$1.76	
2011	MN	4	0	A00122841	AIW6811		Halverson, Brian R.	35	F0003808	21-APR-2011	ZNL	336546	348210	611130	02		D		\$107.68	
2011	MN	4	0	A00122841	AIW6811		Halverson, Brian R.	35	F0003808	21-APR-2011	ZNL	3F0214	372813	611130	08		D		\$322.32	
2011	MN	4	0	A00126201	AIW6829		Gulkison, Bailey S.	35	F0003808	21-APR-2011	ZRB	139990	152020	622080	06	1P0030	D		\$0.13	
2011	MN	4	0	A00126201	AIW6829		Gulkison, Bailey S.	35	F0003808	21-APR-2011	ZNL	318000	348216	611130	02	3AC463	D		\$6.00	
2011	MN	4	0	A00126201	AIW6829		Gulkison, Bailey S.	35	F0003808	21-APR-2011	ZNL	3F0214	372813	611130	08		D		\$24.00	
2011	MN	4	0	A00115836	AIW6829		Sundmark, Aaron P.	35	F0003808	21-APR-2011	ZRB	139990	152020	622080	06	1P0030	D		\$1.11	
2011	MN	4	0	A00115836	AIW6829		Sundmark, Aaron P.	35	F0003808	21-APR-2011	ZNL	318000	348216	611130	02	3AC463	D		\$67.50	
2011	MN	4	0	A00115836	AIW6829		Sundmark, Aaron P.	35	F0003808	21-APR-2011	ZNL	3F0214	372813	611130	08		D		\$202.50	
2011	MN	4	0	A00114646	AIW6830		Petersen-Vilborg, Abigail	35	F0003808	21-APR-2011	ZRB	139990	152020	622080	06	1P0030	D		\$0.24	
2011	MN	4	0	A00114646	AIW6830		Petersen-Vilborg, Abigail	35	F0003808	21-APR-2011	ZNL	318000	348216	611130	02	3AH217	D		\$14.37	
2011	MN	4	0	A00114646	AIW6830		Petersen-Vilborg, Abigail	35	F0003808	21-APR-2011	ZNL	3F0214	372813	611130	08		D		\$43.01	
2011	MN	4	0	A00124641	AIW6831		Brandenburg, Nicholas R.	35	F0003808	21-APR-2011	ZRB	139990	152020	622080	06	1P0030	D		\$0.46	
2011	MN	4	0	A00124641	AIW6831		Brandenburg, Nicholas R.	35	F0003808	21-APR-2011	ZNL	336247	348210	611130	02		D		\$27.89	
2011	MN	4	0	A00124641	AIW6831		Brandenburg, Nicholas R.	35	F0003808	21-APR-2011	ZNL	3F0214	372813	611130	08		D		\$63.49	
2011	MN	4	0	A00079128	AIW6831		Douglas, Gregory J.	35	F0003808	21-APR-2011	ZRB	139990	152020	622080	06	1P0030	D		\$0.52	
2011	MN	4	0	A00079128	AIW6831		Douglas, Gregory J.	35	F0003808	21-APR-2011	ZNL	336247	348210	611130	02		D		\$31.67	
2011	MN	4	0	A00079128	AIW6831		Douglas, Gregory J.	35	F0003808	21-APR-2011	ZNL	3F0214	372813	611130	08		D		\$96.63	
2011	MN	4	0	A00065349	AIW6831		Meyer, Allen J.	35	F0003808	21-APR-2011	ZRB	139990	152020	622080	06	1P0030	D		\$0.31	
2011	MN	4	0	A00065349	AIW6831		Meyer, Allen J.	35	F0003808	21-APR-2011	ZNL	336247	348210	611130	02		D		\$55.89	
2011	MN	4	0	A00065349	AIW6831		Meyer, Allen J.	35	F0003808	21-APR-2011	ZNL	3F0214	372813	611130	08		D		\$167.06	

Sort by Fund Org | Sort by POSN FOAP | SPC Detail Supporting Data | SPC Exp Correction Summary

For Help, press F1

start | Microsoft Excel - book1 | SunGard Higher E... | Federal Work Stu... | Oracle Business I... | Microsoft Excel - ... | PROD Banner - W... | Oracle Developer ...

3:13 PM Thursday

- Tab: SPC Detail Supporting Data is the printable report.
 - This provides the information by Activity Code, Employer, Employee Name
 - Parameter: Enter Begin Date and Enter End Date

Oracle Business Intelligence Discoverer Desktop - [BOR SPC 139990 for WorkStudy E-Corrections]

File Edit View Sheet Format Tools Graph Window Help

Arial 8 B U

FEDERAL WORKSTUDY STUDENT'S ECLS 35
MONTHLY PAYROLL TRANSACTIONS - SPC Detail Supporting Data
 Date Selection Parameter #1: '01-APR-2011', End Date Selection: '30-APR-2011'

Page Items: FY: 2011 ECLS: 35

Employer	CY	Payroll	Pay_#	Event	Id	Position	Name	Document	Trans_Date	RUCL	Fund	Org	Account	Prog	Activity	Loc	Dr/Cr	N-Trans_#	N-Trans_#
SDMT	2011	MN	4	0	A00107916	MV9947	Alley, Brittany A.	F0003808	21-APR-2011	ZRB	139990	152020	622010	06	1P0020	D			\$6.82
	2011	MN	4	0	A00124388	MV9949	Gillaspie, Jessica S.	F0003808	21-APR-2011	ZRB	139990	152020	622010	06		D			\$17.36
	2011	MN	4	0	A00123743	MV9947	Huber, Matthew A.	F0003808	21-APR-2011	ZRB	139990	152020	622010	06		D			\$7.60
	2011	MN	2	1	A00110340	MV9945	Ruppelt, Brian R.	F0003736	07-APR-2011	ZRB	139990	152020	622010	06		C			<\$26.51>
	2011	MN	3	1	A00110340	MV9945	Ruppelt, Brian R.	F0003737	07-APR-2011	ZRB	139990	152020	622010	06		C			<\$9.76>
	2011	MN	2	2	A00110340	MV9945	Ruppelt, Brian R.	F0003736	07-APR-2011	ZRB	139990	152020	622010	06		D			\$26.51
	2011	MN	3	2	A00110340	MV9945	Ruppelt, Brian R.	F0003737	07-APR-2011	ZRB	139990	152020	622010	06		D			\$9.76
	2011	MN	4	0	A00110650	MV9947	Timm, Christopher M.	F0003808	21-APR-2011	ZRB	139990	152020	622010	06		D			\$13.49
																			Employer Sum: \$45.27
SDSU	2010	MN	8	2	A00093670	AW9877	Grav, Kyle P.	F0003730	07-APR-2011	ZRB	139990	152020	622010	06		C			<\$7.91>
	2010	MN	8	3	A00093670	AW9877	Grav, Kyle P.	F0003730	07-APR-2011	ZRB	139990	152020	622010	06		D			\$7.91
																			Employer Sum: \$0.00
USD	2011	MN	4	0	A00082809	UM8264	Packard, Rebecca A.	F0003808	21-APR-2011	ZRB	139990	152020	622010	06		D			\$20.02
																			Employer Sum: \$20.02
																			Total Activity: \$65.29
SDMT	2011	MN	4	0	A00107916	MV9947	Alley, Brittany A.	F0003808	21-APR-2011	ZRB	139990	152020	622011	06	1P0025	D			\$1.59
	2011	MN	4	0	A00124388	MV9949	Gillaspie, Jessica S.	F0003808	21-APR-2011	ZRB	139990	152020	622011	06		D			\$4.06
	2011	MN	4	0	A00123743	MV9947	Huber, Matthew A.	F0003808	21-APR-2011	ZRB	139990	152020	622011	06		D			\$1.78
	2011	MN	3	2	A00110340	MV9945	Ruppelt, Brian R.	F0003737	07-APR-2011	ZRB	139990	152020	622011	06		D			\$2.29
	2011	MN	2	2	A00110340	MV9945	Ruppelt, Brian R.	F0003736	07-APR-2011	ZRB	139990	152020	622011	06		D			\$6.19
	2011	MN	3	1	A00110340	MV9945	Ruppelt, Brian R.	F0003737	07-APR-2011	ZRB	139990	152020	622011	06		C			<\$2.29>
	2011	MN	2	1	A00110340	MV9945	Ruppelt, Brian R.	F0003736	07-APR-2011	ZRB	139990	152020	622011	06		C			<\$6.19>
	2011	MN	4	0	A00110650	MV9947	Timm, Christopher M.	F0003808	21-APR-2011	ZRB	139990	152020	622011	06		D			\$3.15
																			Employer Sum: \$10.58
SDSU	2010	MN	8	2	A00093670	AW9877	Grav, Kyle P.	F0003730	07-APR-2011	ZRB	139990	152020	622011	06		C			<\$1.85>
	2010	MN	8	3	A00093670	AW9877	Grav, Kyle P.	F0003730	07-APR-2011	ZRB	139990	152020	622011	06		D			\$1.85
																			Employer Sum: \$0.00
USD	2011	MN	4	0	A00082809	UM8264	Packard, Rebecca A.	F0003808	21-APR-2011	ZRB	139990	152020	622011	06		D			\$4.68
																			Employer Sum: \$4.68
																			Total Activity: \$15.26
BHSU	2011	MN	4	0	A00109631	BV9808	Adams, Susanna M.	F0003808	21-APR-2011	ZRB	139990	152020	622080	06	1P0030	D			\$2.07
	2011	MN	4	0	A00125898	BV9828	Anderson, Courtney R.	F0003808	21-APR-2011	ZRB	139990	152020	622080	06		D			\$2.61
	2011	MN	4	0	A00123535	BV9881	Anderson, Laura R.	F0003808	21-APR-2011	ZRB	139990	152020	622080	06		D			\$1.89
	2011	MN	4	0	A00095466	BV9718	Antonsen, Jody M.	F0003808	21-APR-2011	ZRB	139990	152020	622080	06		D			\$2.25
	2011	MN	4	0	A00121833	BV9807	Arneson, Natacha N.	F0003808	21-APR-2011	ZRB	139990	152020	622080	06		D			\$2.09
	2011	MN	4	0	A00101123	BV9708	Baley, Christopher J.	F0003808	21-APR-2011	ZRB	139990	152020	622080	06		D			\$2.84
	2011	MN	4	0	A00108559	BV9967	Barrett, Lauren A.	F0003808	21-APR-2011	ZRB	139990	152020	622080	06		D			\$1.98
	2011	MN	4	0	A00107994	BV9998	Bartlett, Lindsay R.	F0003808	21-APR-2011	ZRB	139990	152020	622080	06		D			\$1.51
	2011	MN	4	0	A00107994	BV9998	Bartlett, Lindsay R.	F0003808	21-APR-2011	ZRB	139990	152020	622080	06		D			\$4.46
	2011	MN	4	0	A00125710	BV9823	Baumberger, Elyja J.	F0003808	21-APR-2011	ZRB	139990	152020	622080	06		D			\$0.94
	2011	MN	4	0	A00094700	BV9826	Beckler, Jennifer J.	F0003808	21-APR-2011	ZRB	139990	152020	622080	06		D			\$3.22
	2011	MN	4	0	A00121842	BV9988	Bloom, Morgan L.	F0003808	21-APR-2011	ZRB	139990	152020	622080	06		D			\$0.24
	2011	MN	4	0	A00095328	BV9966	Bolstad, Jenna T.	F0003808	21-APR-2011	ZRB	139990	152020	622080	06		D			\$1.66
	2011	MN	4	0	A00121843	BV9967	Boring, Jaclyn R.	F0003808	21-APR-2011	ZRB	139990	152020	622080	06		D			\$2.66
	2011	MN	4	0	A00054066	BV9826	Boring, Steven J.	F0003808	21-APR-2011	ZRB	139990	152020	622080	06		D			\$1.55
	2011	MN	4	0	A00114919	BV9826	Bossen, Andrea M.	F0003808	21-APR-2011	ZRB	139990	152020	622080	06		D			\$2.72

Sort by POSN FOAP SPC Detail Supporting Data SPC Exp Correction Summary

NUM